

Phase Shifters

Adapters Attenuators Couplers

DC Blocks

Detectors

Isolators & Circulators

Phase Shifters

Power Dividers and Hybrids

Terminations (50 Ohm Loads)

Waveguide

Type N (F) 1 to 12.4 GHz 200W Precision Control Phase Shifters



Features

- Broadband Coverage - 180° Phase Shift at Minimum Frequency
- Low VSWR
- +/- 0.5°/GHz Accuracy with Digital Dial Readout

Models

- 3752, 3753B

| Model | 3752 | 3753B |
|-------------------------|-------------------|---------------------|
| Low Frequency (GHz) | 1.0 | 3.5 |
| High Frequency (GHz) | 5.0 | 12.4 |
| Minimum Phase Shift | 180 Deg. at 1 GHz | 180 Deg. at 3.5 GHz |
| Average Power (W) | 200 | 200 |
| Peak Power (kW) | 5 | 5 |
| Insertion Loss dB (max) | 0.5 | 0.7 |
| VSWR (max) | 1.25 | N/A |
| VSWR (Max) 3.5-10 GHz | N/A | 1.35 |
| VSWR (max) 10-12.4 GHz | N/A | 1.4 |
| Accuracy (in Deg./GHz) | +/-0.5 | +/-0.5 |
| Weight (max) in lbs | 4.5 | 3.3 |
| Weight (max) in kg | 2.05 | 1.5 |

Phase Shifters

Adapters Attenuators Couplers

DC Blocks

Detectors

Isolators & Circulators

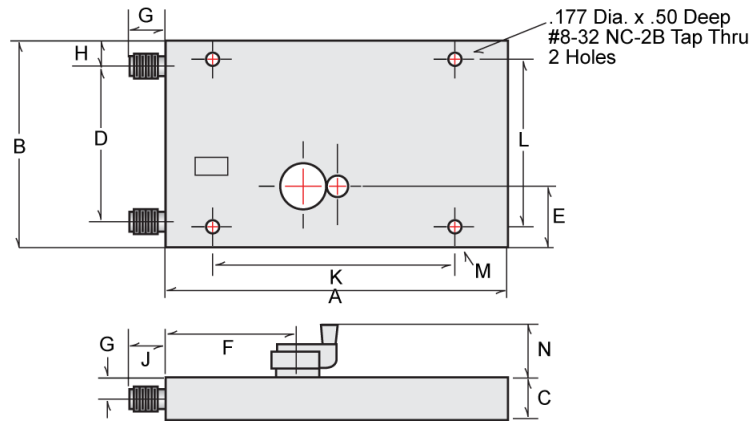
Phase Shifters

Power Dividers and Hybrids

Terminations (50 Ohm Loads)

Waveguide

Type N (F) 1 to 12.4 GHz 200W Precision Control Phase Shifters



Outline Drawings For Models : 3752, 3753B

| Units | A | B | C | D | E | F | G | H | J | K | L | M (Dia.) | N |
|--------------|--------|--------|-------|--------|-------|-------|-------|-------|-------|--------|--------|----------|-------|
| 3752 | | | | | | | | | | | | | |
| in. | 9.03 | 5.53 | 1.12 | 4.13 | 1.56 | 3.75 | 0.56 | 0.68 | 0.75 | 6.00 | 5.13 | 0.177 | 1.50 |
| mm | 229.36 | 140.46 | 28.45 | 104.90 | 39.62 | 95.25 | 14.22 | 17.27 | 19.05 | 152.40 | 130.30 | 4.496 | 38.10 |
| 3753B | | | | | | | | | | | | | |
| in. | 6.72 | 4.69 | 1.28 | 3.50 | 1.59 | 1.13 | 0.75 | 0.58 | 1.22 | 4.50 | 4.31 | 0.177 | 1.50 |
| mm | 170.69 | 119.13 | 32.51 | 88.90 | 40.39 | 28.70 | 19.05 | 14.73 | 30.99 | 114.30 | 109.47 | 4.496 | 38.10 |

Notes:

All dimensions are max. unless otherwise specified.